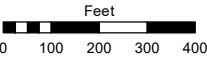
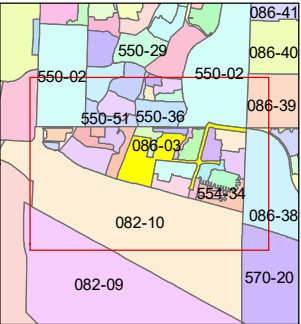
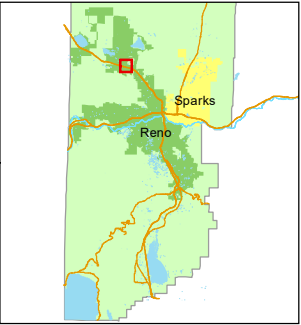


STATE OF NEVADA  
**WASHOE COUNTY**  
**ASSESSOR'S OFFICE**

1001 East Ninth Street, Building D  
Reno, Nevada 89512  
(775) 328-2231



1 inch = 400 feet



created by: EMG 11/17/14

updated: JMO 06/24/19 JMO 07/05/19

SR 04/08/20 SR 11/18/20 JRA 03/18/22

area previously shown on map(s):

082-09

NOTE: This map was prepared for the use of the Washoe County Assessor for assessment and illustrative purposes only. It does not represent a survey of the premises. No liability is assumed as to the sufficiency or accuracy of the data delineated hereon.

PORTION OF N½ OF SECTION 8  
T20N - R19E

DA = DEDICATION AREA